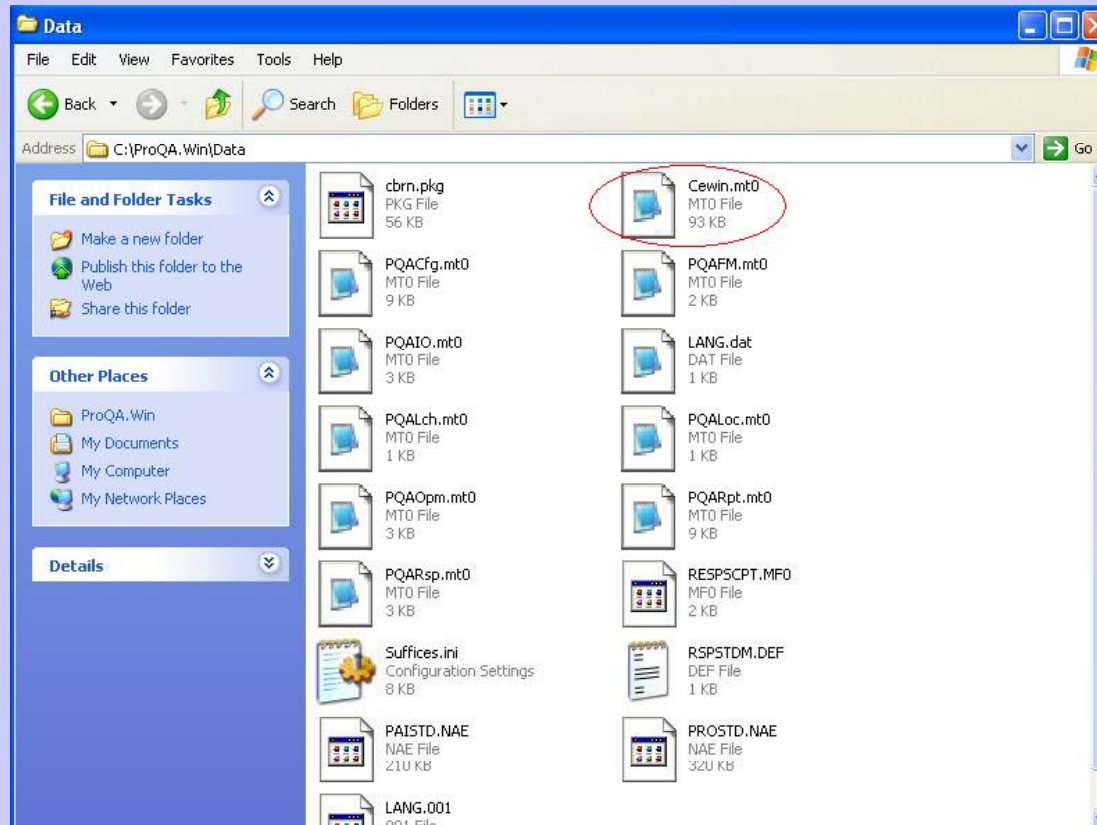




Severe Respiratory Infection (SRI) Information Gathering

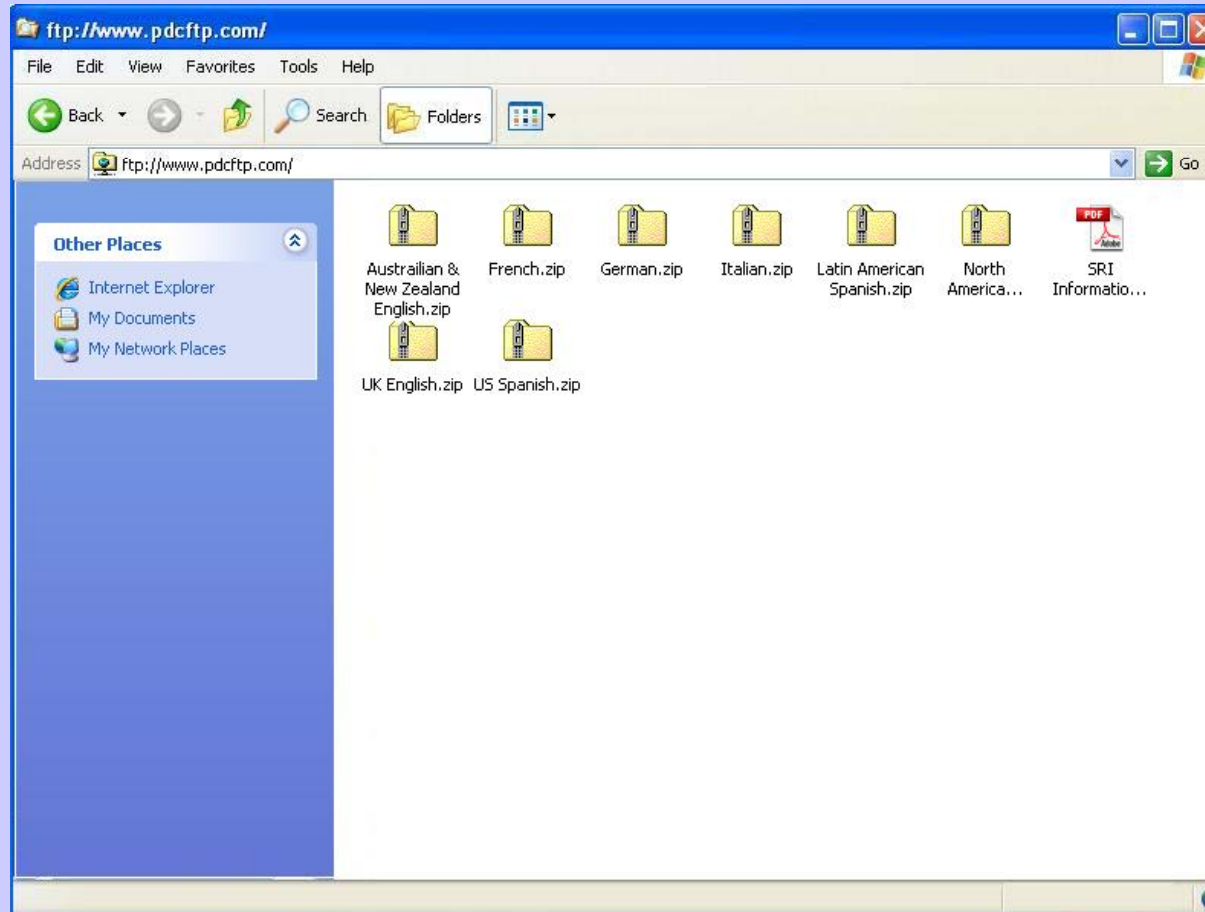
Priority Dispatch Corporation

Updating ProQA SRI Info



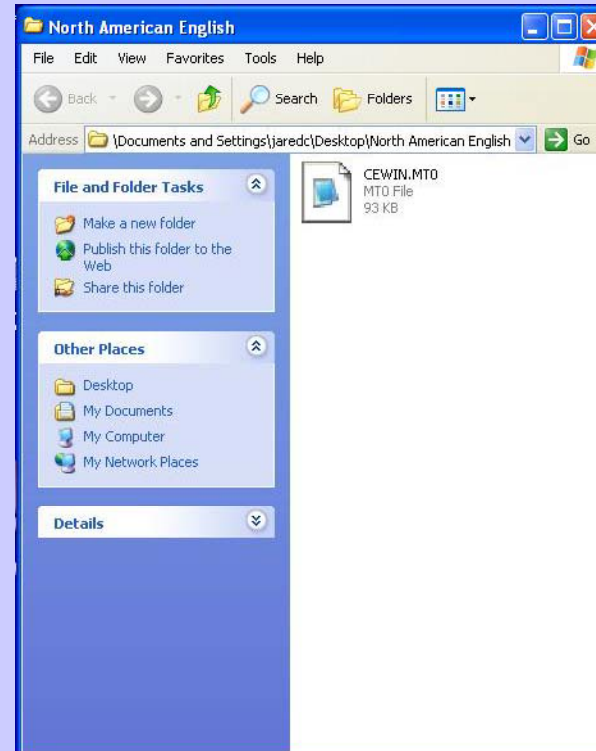
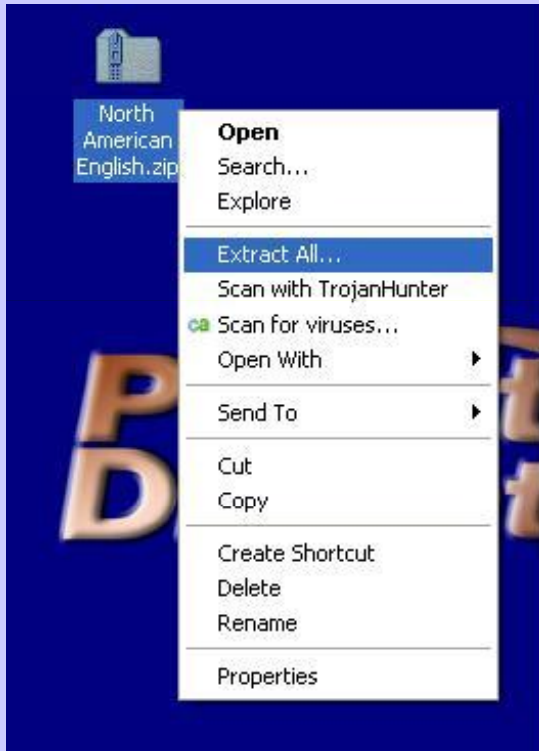
- To apply the SRI update: Locate the Cewin.mt__ file (Cewin.mt0 in screenshot) in your C:\ProQA.Win\Data directory. Note the filename then rename it to Cewinold.mt__

Updating ProQA SRI Info



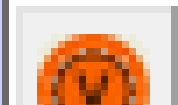
- Open the SRI FTP site and download the appropriate file to your computer.
- To request FTP access visit http://www.prioritydispatch.net/support/form_ftp.php

Updating ProQA SRI Info



- Extract the file, check that the Cewin.mt__ file matches the name you noted earlier, then place the file in the Data directory (C:\ProQA.win\Data) .

SRI Information Gathering

- Use the Severe Respiratory Infection (SRI) checklist located on the toolbar in ProQA.
-  Activates the SRI Checklist



SRI Information Gathering

Severe Respiratory Infection (Swine Flu) Sympto...

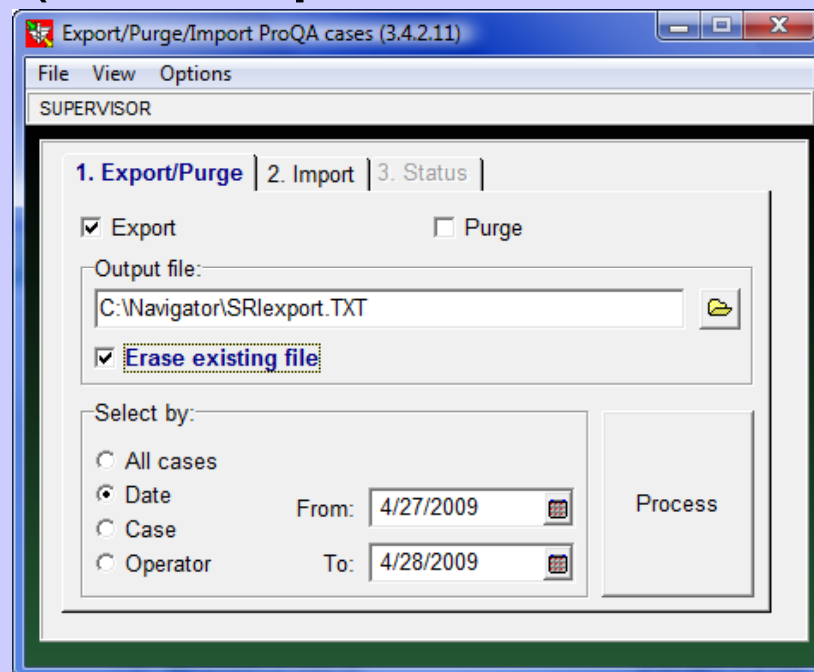
Cancel Info Completed →

Listen carefully and tell me if s/he has any of the following symptoms

- difficulty breathing or shortness of breath
- persistent cough
- measured body temperature > 100° F (38° C)
- chills
- unusual sweats
- hot to the touch in room temperature
- body aches
- sore throat
- nasal congestion (blocked nose)
- runny nose
- contact with someone with the flu (or flu-like symptoms)
- traveled recently (if so, where?)

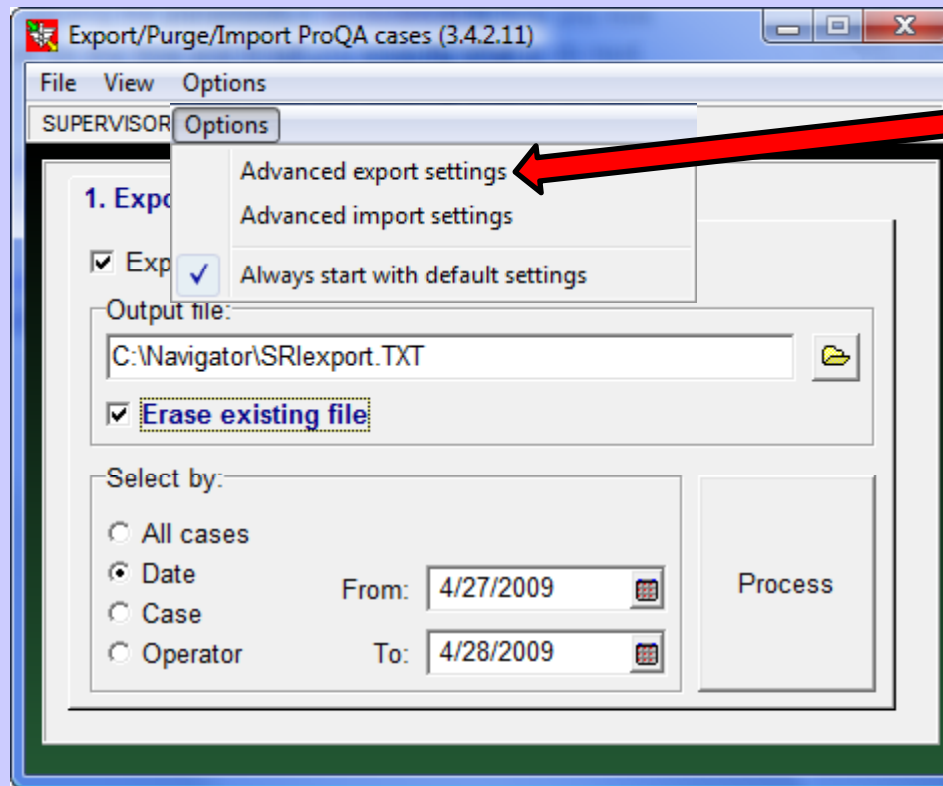
SRI Information Gathering

- Open the ProQA Export/Purge/Import Utility
- Create a file location for your data.
- Name the File SRIExport-Agency Name-City-State (SRIExport- CharlestonEMS-SC.exp)



SRI Information Gathering

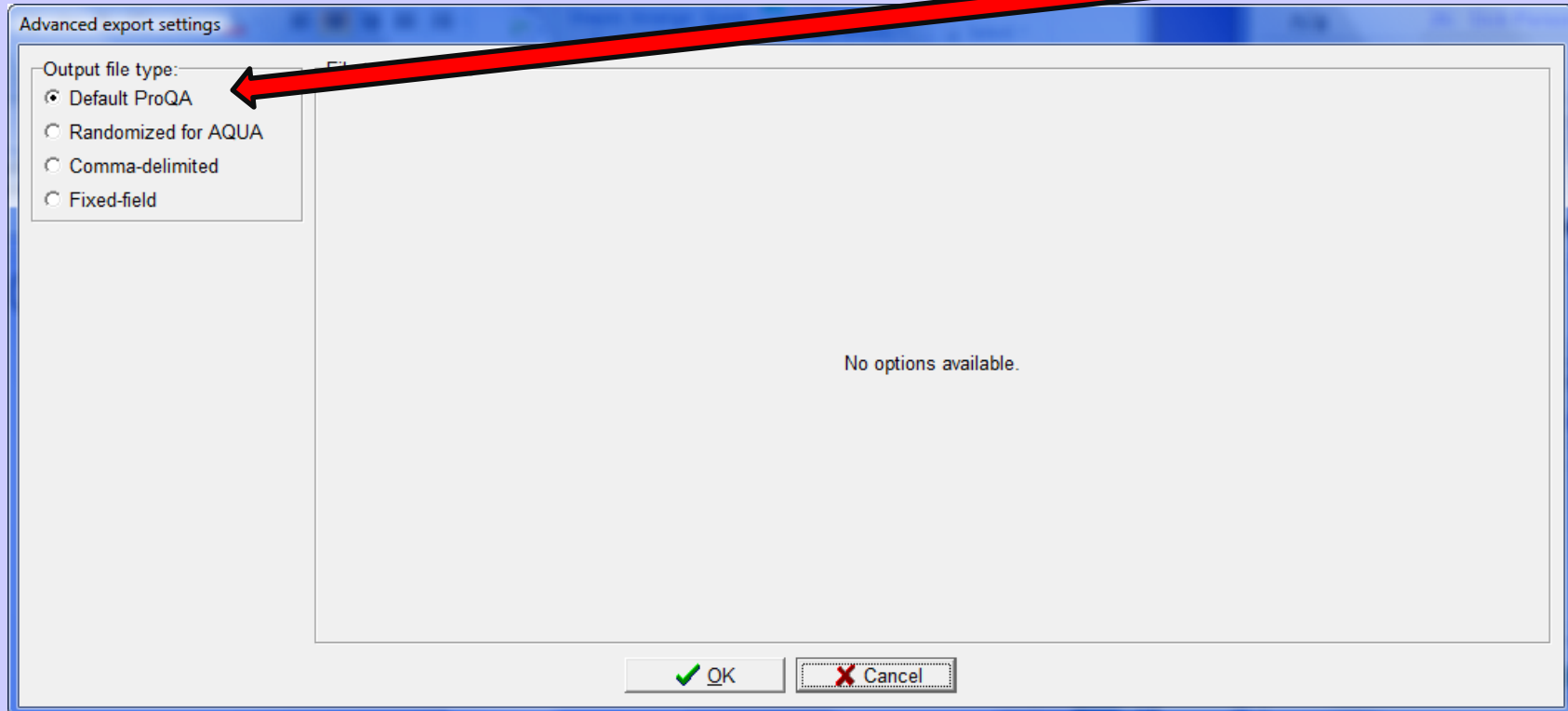
- In the menu, select “Options” then “Advanced Export Settings”





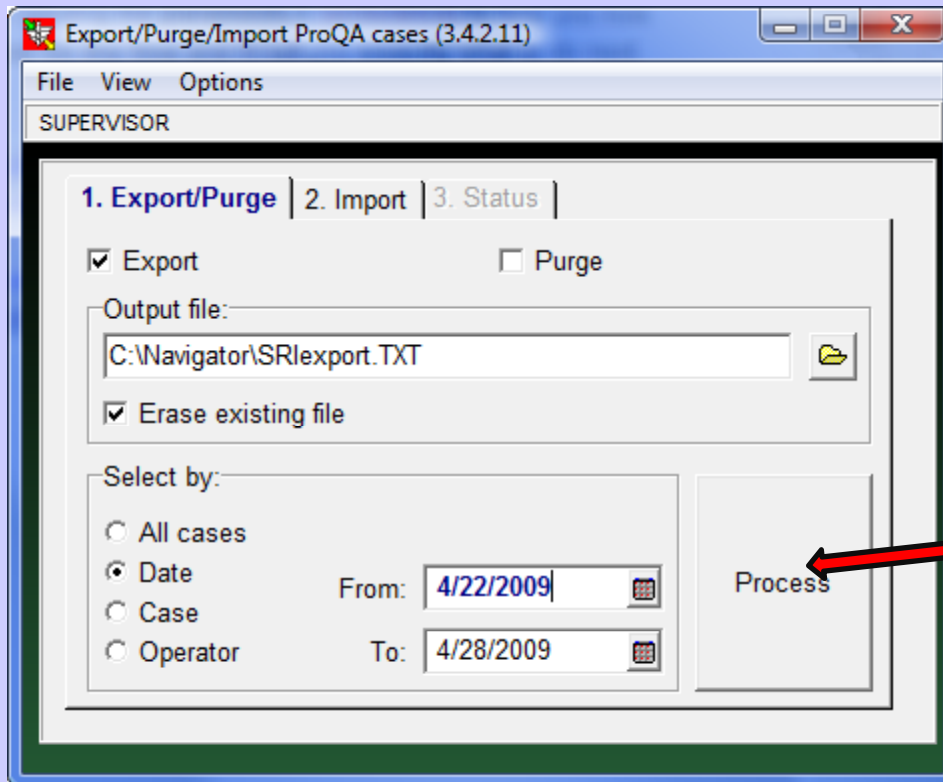
SRI Information Gathering

- Select “Default ProQA” then select “OK”



SRI Information Gathering

- Ensure you select your date ranges and then select “Process”



Export/Purge/Import ProQA cases (3.4.2.11)

File View Options

SUPERVISOR

1. Export/Purge | 2. Import | 3. Status |

Export Purge

Output file:
C:\Navigator\SRlexport.TXT

Erase existing file

Select by:

All cases
 Date
 Case
 Operator

From: 4/22/2009

To: 4/28/2009

Process



SRI Information Gathering

- The data that you exported contains all the information from ProQA in raw forms.

[CASE INFO]

"F GORDON" "620" 1090002869

04-27-2009 14:59:47

04-27-2009 15:00:25

04-27-2009 15:00:23

0

sick

139 East South Temple

801-363-9127

26 1 4 32



SRI Information Gathering

- SRI Information can be found in the following format:

[CBRN]

250=11,12,24,28,27,25,26,19,20,21,22,23

250 = Severe Respiratory Infection (SRI)



SRI Information Gathering

250 SEVERE RESPIRATORY INFECTION

- 11 DIFFICULTY BREATHING OR SHORTNESS OF BREATH
- 12 PERSISTENT COUGH
- 19 SORE THROAT
- 20 NASAL CONGESTION



SRI Information Gathering

- 21 A RUNNY NOSE
- 22 CONTACT WITH SOMEONE WITH SEVERE FLU-LIKE SYMPTOMS
- 23 TRAVELED RECENTLY? IF SO, WHERE:
- 24 MEASURED BODY TEMPERATURE => 100 DEGREES F (37.8 DEGREES C)
- 25 HOT TO THE TOUCH IN ROOM TEMPERATURE



SRI Information Gathering

- 26 BODY ACHES
- 27 UNUSUAL SWEATS
- 28 CHILLS



SRI Information Gathering

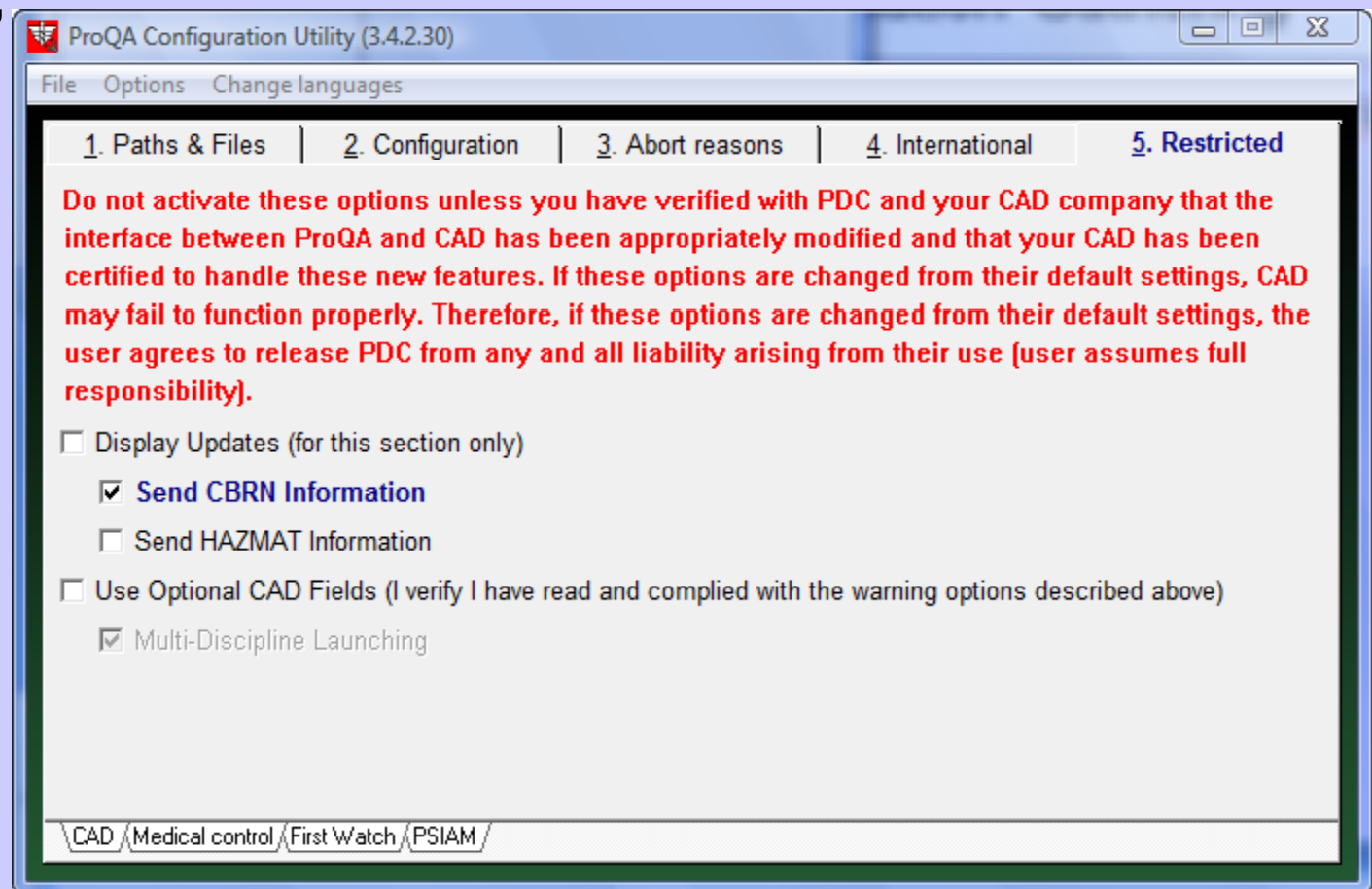
!!Be sure to check with your CAD vendor to ensure that they support this feature!!

- To turn on the passage of SRI Information to the CommFile (Real-Time, during incident passage of data).

!!Be sure to check with your CAD vendor to ensure that they support this feature!!

SRI Information Gathering

- To turn on the passage of SRI Information to the CommFile (Real-Time, during incident passage of data), go to the ProQA Configuration Utility, Tab 5, and check “Send CBRN Information”





SRI Information Gathering

- ProQA passes SRI Information to CAD via the CommFile:
- [CBRNBegin]Severe Respiratory Infection (Flu-Like) Symptoms[Item]difficulty breathing or shortness of breath[Item]persistent cough[Item]measured body temperature => 101 F (38 C)[Item]chills[Item]unusual sweats[Item]extremely hot to the touch in room temperature[Item]drainage from eyes[Item]sore throat[Item]nasal congestion (blocked nose)[Item]runny nose[Item]contact with someone with the flu (or flu-like symptoms)[CBRNEnd]



SRI Information Gathering

For additional information, contact Priority Dispatch Technical Support at 801-363-9127 or technical.support@prioritydispatch.net